

# AJMAN PEARL TOWER

DEVELOPED BY



جي جا العقارية  
PROPERTIES



## AN OASIS OF REFINED ELEGANCE IN AJMAN'S HEART

Ajman, a hidden gem within the UAE, offers a unique blend of natural beauty, rich cultural heritage, and modern convenience.

Its strategic location provides easy access to major hubs, ensuring a vibrant yet serene lifestyle for residents.

In its vibrant heart, Ajman Pearl Tower emerges as a residential gem, offering sophisticated comfort and modern living.

Developed by GJ Properties, it is designed for those seeking an elevated urban lifestyle, blending elegance and convenience.







## WHY INVEST IN AJMAN

Ajman's appeal includes its status as a Top 5 Safest City, strategic connectivity to all 7 Emirates, investor-friendly policies with Golden Visa eligibility, and diverse, affordable property options. Ongoing infrastructure and urban development enhance its investment potential.





## URBAN CONVENIENCE AT YOUR DOORSTEP

Nestled in Ajman's vibrant heart, Ajman Pearl Tower grants residents effortless access to the city's finest offerings. Residents will appreciate the proximity to:

1. Ajman City Centre: 10 Min.
2. Ajman Beach: 10 Min.
3. Amina Hospital: 10 Min.
4. Al Hamediya Park: 14 Min.
5. Ajman University: 15 Min.
6. Sharjah International Airport: 20 Min.
7. Dubai International Airport: 30 Min.
8. Al Marjan Island-RAK: 48 Min.







## AJMAN DOWNTOWN

Ajman Downtown stands out as one of the Emirate's most sought-after locations, known for its dynamic atmosphere and strategic position.

With Ajman City Centre just a short distance away, residents benefit from easy access to shopping malls, schools, hospitals, and nearby beaches.

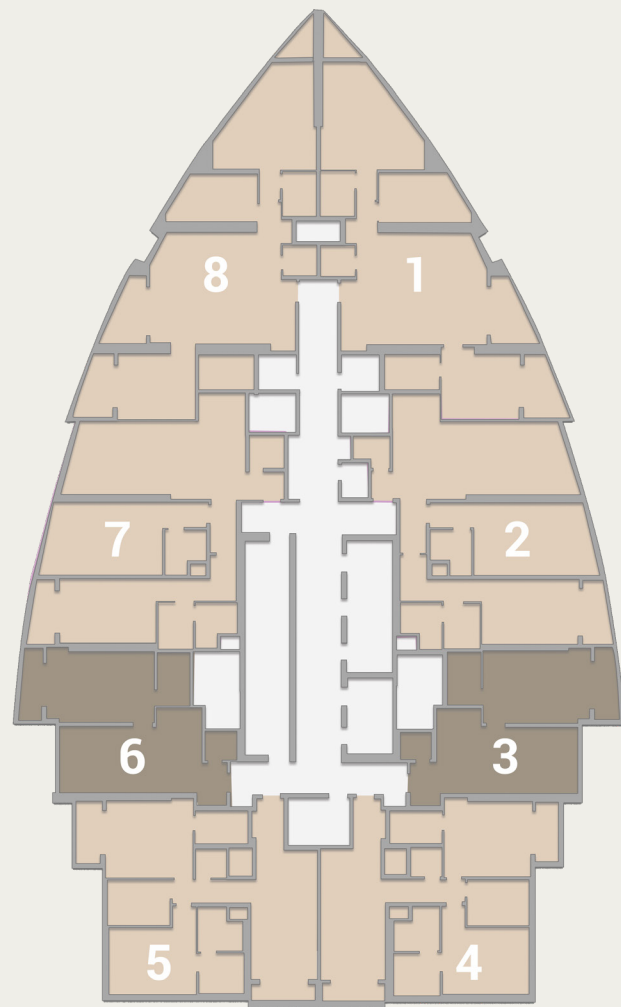
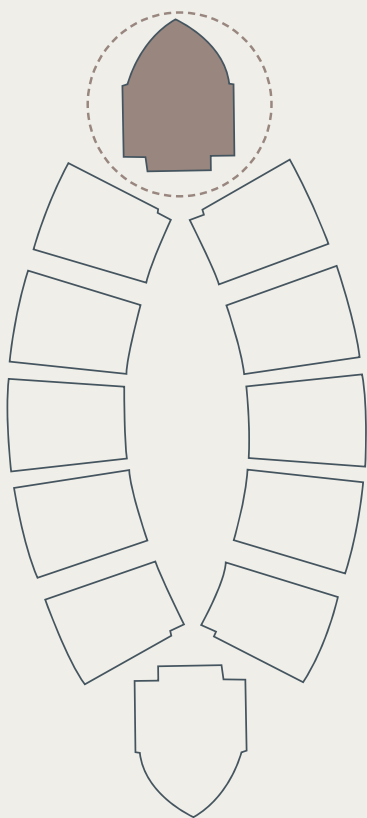
This thriving neighborhood is ideal for both professionals and families alike. Ajman Pearl Towers, nestled in this central area, offers a perfect mix of modern living and convenience, making it an excellent choice for those seeking accessibility and quality.





# AJMAN PEARL

TOWER



## A NEW RESIDENTIAL GEM

Ajman Pearl Tower, developed by GJ Properties, offers a unique blend of sophistication and modern comfort in 208 exclusive apartments. With its prime location, exclusive homes, and unmatched quality, it aims to be a coveted address in the city.



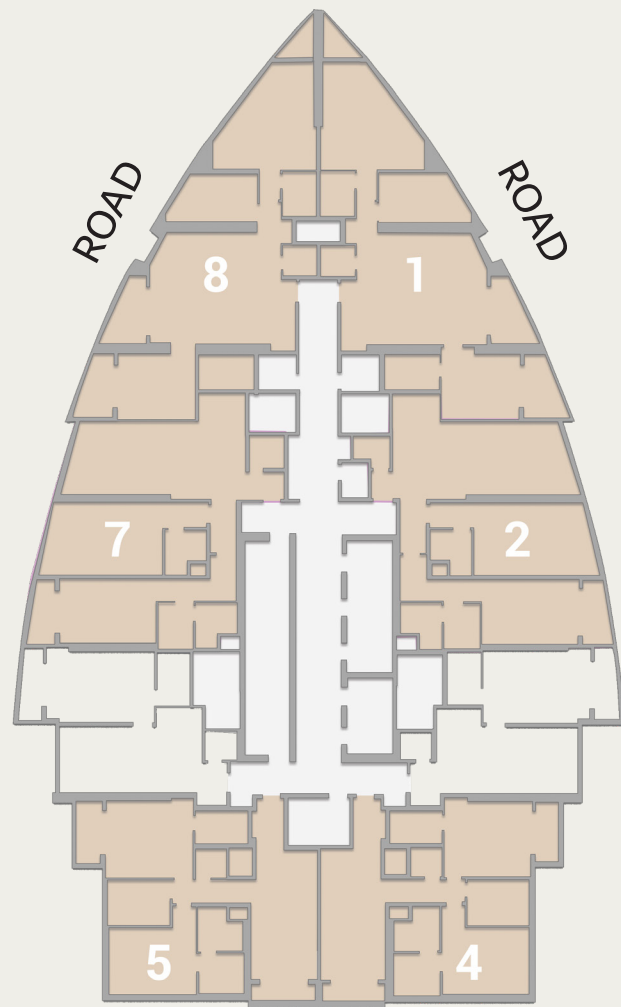







# AJMAN PEARL TOWER

## CLOSED KITCHEN



 2 BEDROOM

NEIGHBOUR

## MODERN LIVING SPACES

Ajman Pearl Tower features meticulously designed 1-bedroom (1083 sqft) and 2-bedroom (2096 sqft) apartments. Each residence offers spacious layouts, high-quality finishes, and contemporary design elements, creating a haven of tranquility.



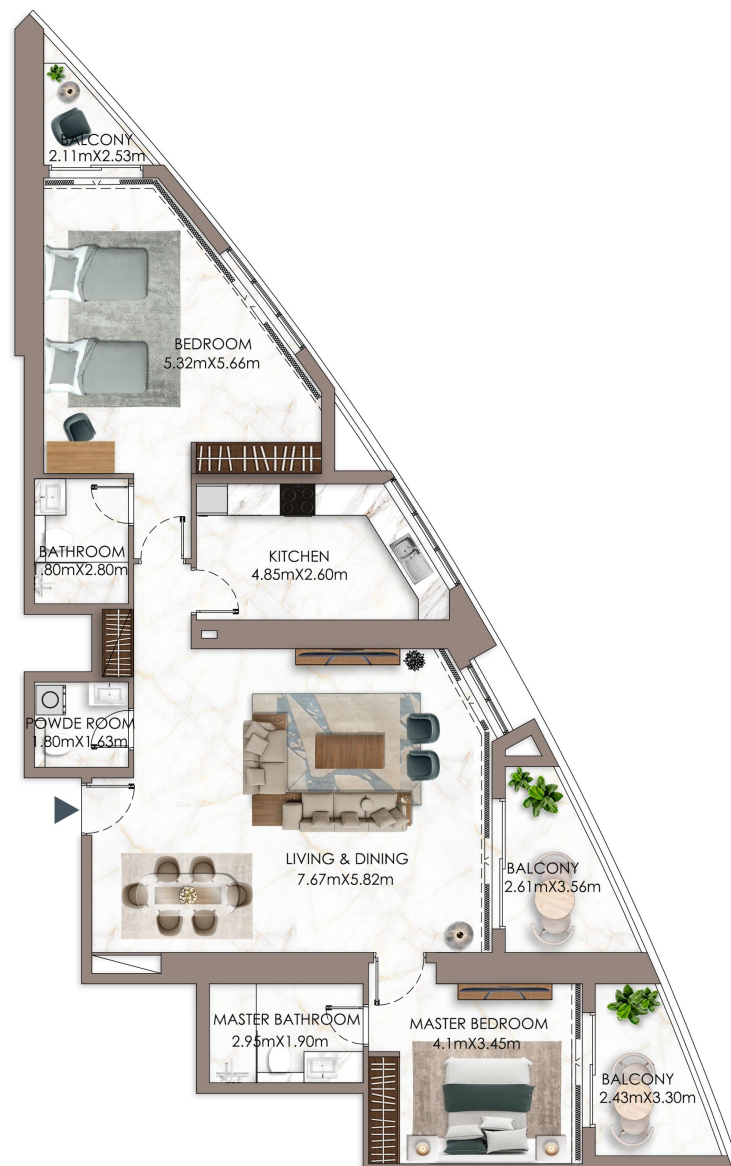




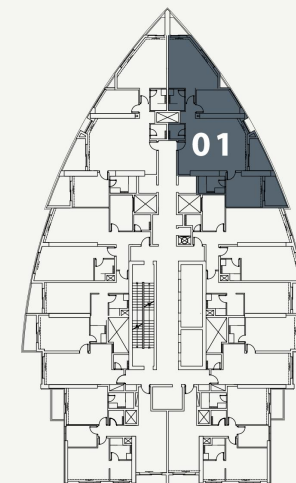


# AJMAN PEARL

TOWER



## KEY PLAN



## UNIT - 101

### 2 BEDROOM

#### LEVEL-01

Internal Living Area	1413.41	sq.ft.
Outdoor Living Area	167.27	sq.ft.
<b>Total Living Area</b>	<b>1580.68</b>	<b>sq.ft.</b>

#### DISCLAIMER:

All measurements are indicative and are for marketing purposes only. All efforts have been made to ensure their accuracy, however these layouts are subject to change at the discretion of the developer and should not be relied upon as final. The actual area may vary from the stated area and the developer reserves the right to make the revisions/alterations, at its absolute discretion, without any liability whatsoever.

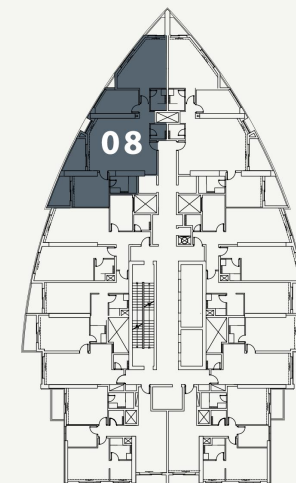


# AJMAN PEARL

TOWER



## KEY PLAN



## UNIT - 108

### 2 BEDROOM

#### LEVEL-01

Internal Living Area	1413.41	sq.ft.
Outdoor Living Area	138.21	sq.ft.
<b>Total Living Area</b>	<b>1551.62</b>	<b>sq.ft.</b>

#### DISCLAIMER:

All measurements are indicative and are for marketing purposes only. All efforts have been made to ensure their accuracy, however these layouts are subject to change at the discretion of the developer and should not be relied upon as final. The actual area may vary from the stated area and the developer reserves the right to make the revisions/alterations, at its absolute discretion, without any liability whatsoever.





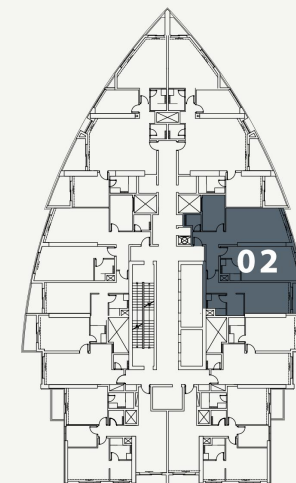


# AJMAN PEARL

TOWER



## KEY PLAN



## UNIT - 102

### 2 BEDROOM

#### LEVEL-01

Internal Living Area	1402.00	sq.ft.
Outdoor Living Area	113.02	sq.ft.
<b>Total Living Area</b>	<b>1515.02</b>	<b>sq.ft.</b>

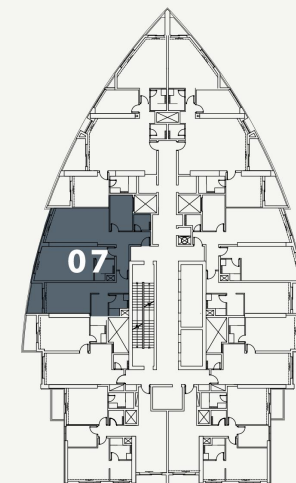
#### DISCLAIMER:

All measurements are indicative and are for marketing purposes only. All efforts have been made to ensure their accuracy, however these layouts are subject to change at the discretion of the developer and should not be relied upon as final. The actual area may vary from the stated area and the developer reserves the right to make the revisions/alterations, at its absolute discretion, without any liability whatsoever.





## KEY PLAN



## UNIT - 107

### 2 BEDROOM

#### LEVEL-01

Internal Living Area	1402.00	sq.ft.
Outdoor Living Area	55.43	sq.ft.
<b>Total Living Area</b>	<b>1457.43</b>	<b>sq.ft.</b>

#### DISCLAIMER:

All measurements are indicative and are for marketing purposes only. All efforts have been made to ensure their accuracy, however these layouts are subject to change at the discretion of the developer and should not be relied upon as final. The actual area may vary from the stated area and the developer reserves the right to make the revisions/alterations, at its absolute discretion, without any liability whatsoever.

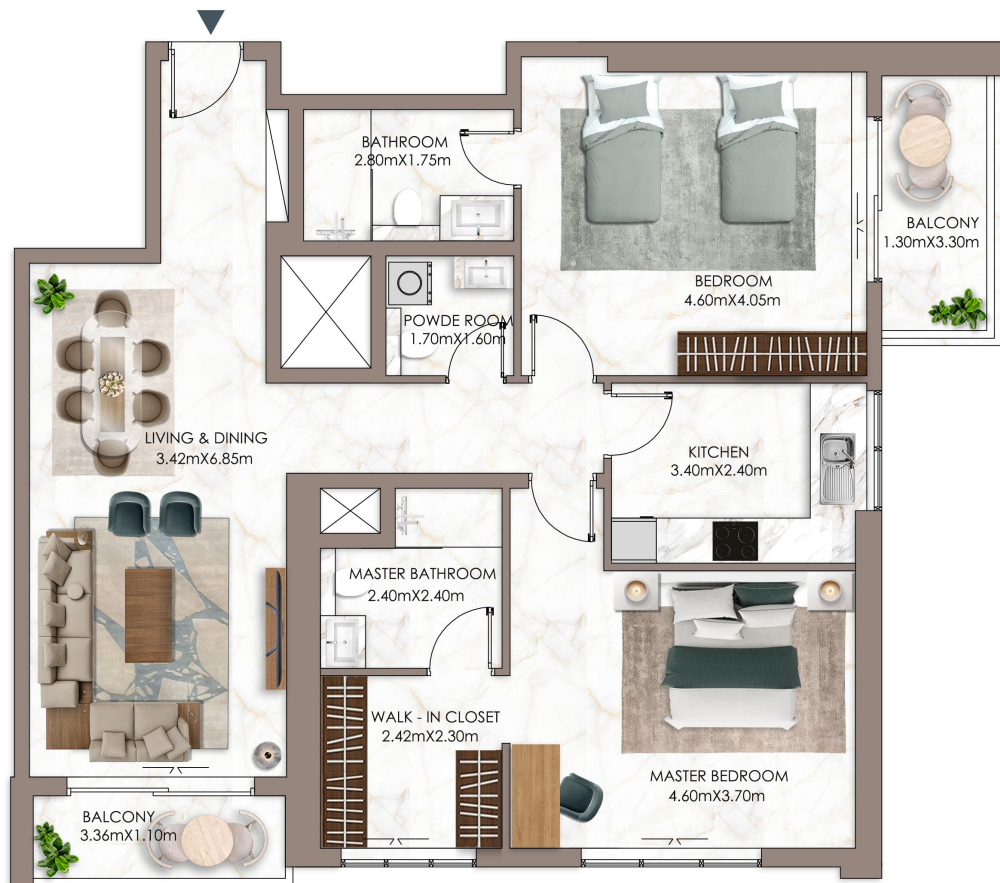




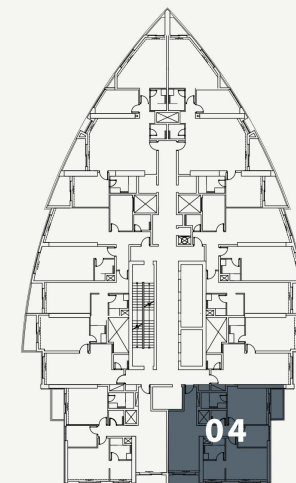


# AJMAN PEARL

TOWER



## KEY PLAN



## UNIT - 104

### 2 BEDROOM

LEVEL-01

Internal Living Area	1228.59	sq.ft.
Outdoor Living Area	111.30	sq.ft.
<b>Total Living Area</b>	<b>1339.89</b>	<b>sq.ft.</b>

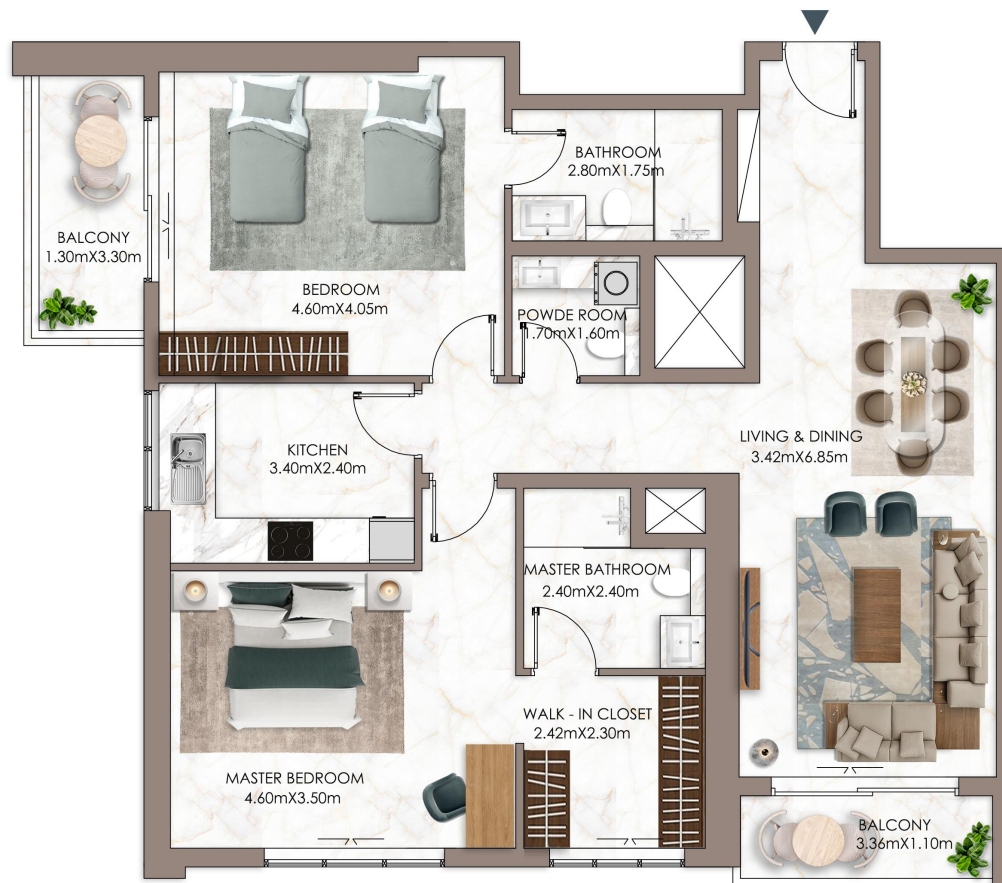
### DISCLAIMER:

All measurements are indicative and are for marketing purposes only. All efforts have been made to ensure their accuracy, however these layouts are subject to change at the discretion of the developer and should not be relied upon as final. The actual area may vary from the stated area and the developer reserves the right to make the revisions/alterations, at its absolute discretion, without any liability whatsoever.

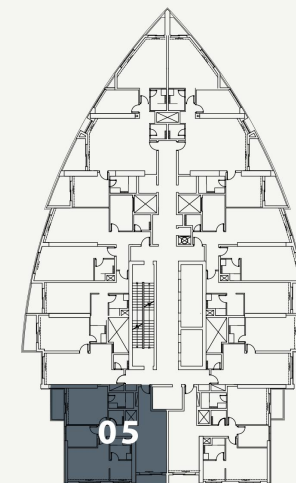


# AJMAN PEARL

TOWER



## KEY PLAN



## UNIT - 105

### 2 BEDROOM

#### LEVEL-01

Internal Living Area	1228.49	sq.ft.
Outdoor Living Area	111.30	sq.ft.
<b>Total Living Area</b>	<b>1339.78</b>	<b>sq.ft.</b>

#### DISCLAIMER:

All measurements are indicative and are for marketing purposes only. All efforts have been made to ensure their accuracy, however these layouts are subject to change at the discretion of the developer and should not be relied upon as final. The actual area may vary from the stated area and the developer reserves the right to make the revisions/alterations, at its absolute discretion, without any liability whatsoever.









## UNMATCHED QUALITY

Ajman Pearl Tower is committed to providing an unparalleled living experience, emphasising exclusive homes and quality craftsmanship. From carefully selected materials to impeccable craftsmanship, every aspect reflects refined elegance and lasting value.



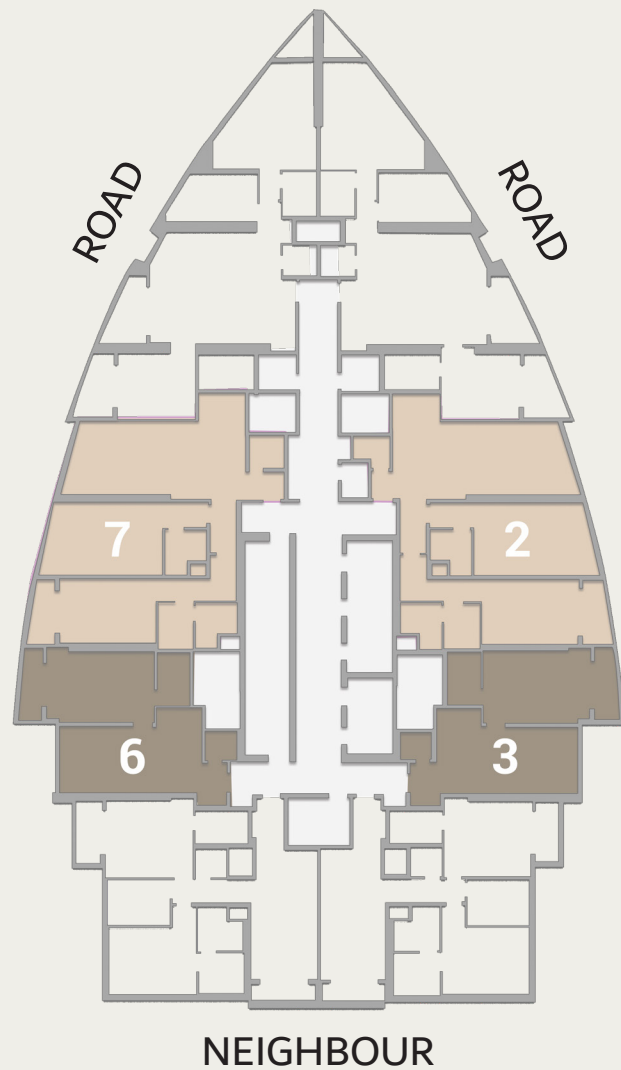






# AJMAN PEARL TOWER

OPENED KITCHEN



## AN ENRICHED LIFE

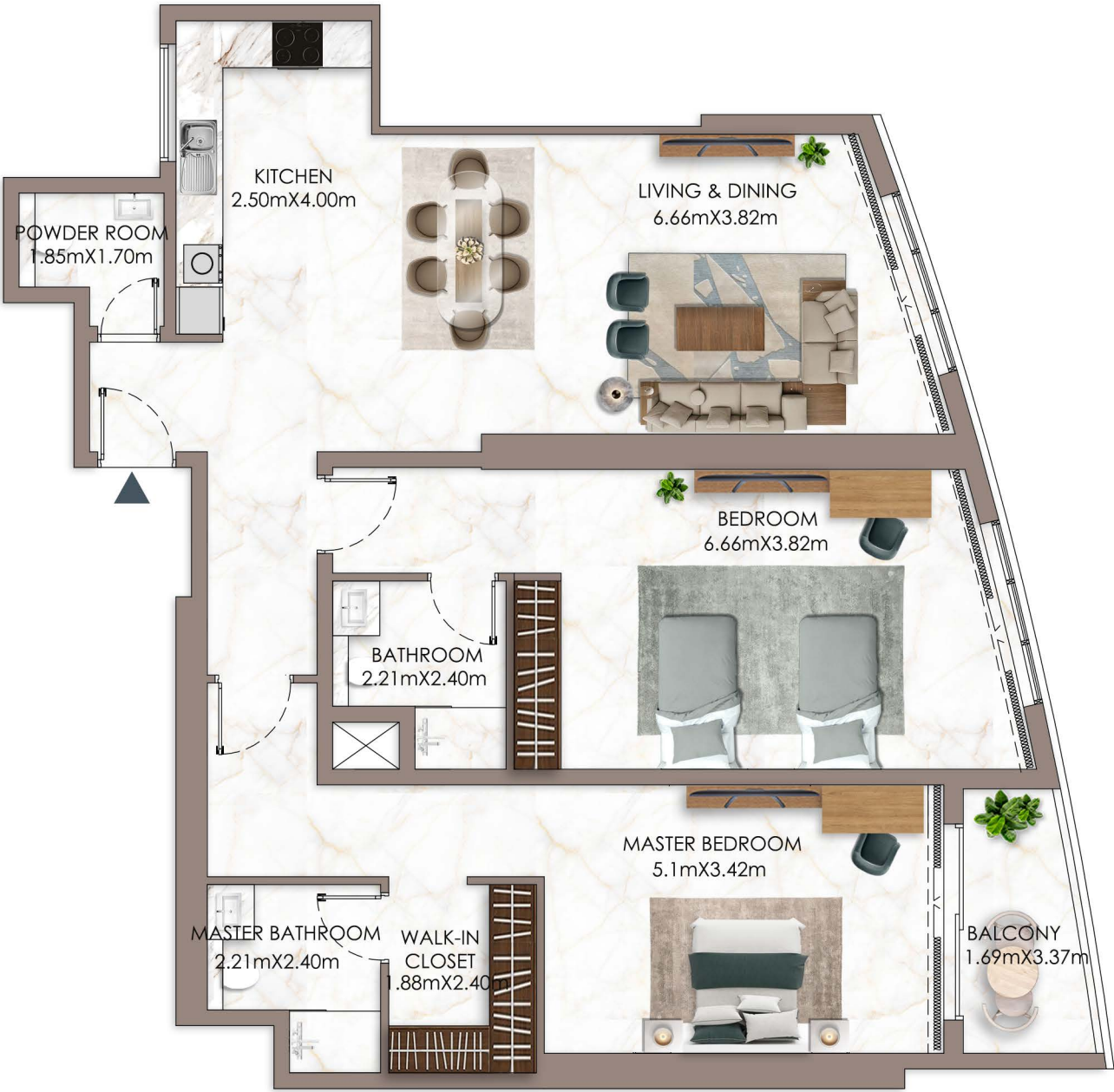
Ajman Pearl Tower offers amenities designed to enhance residents' lifestyles and provide opportunities for relaxation, recreation, and community engagement.



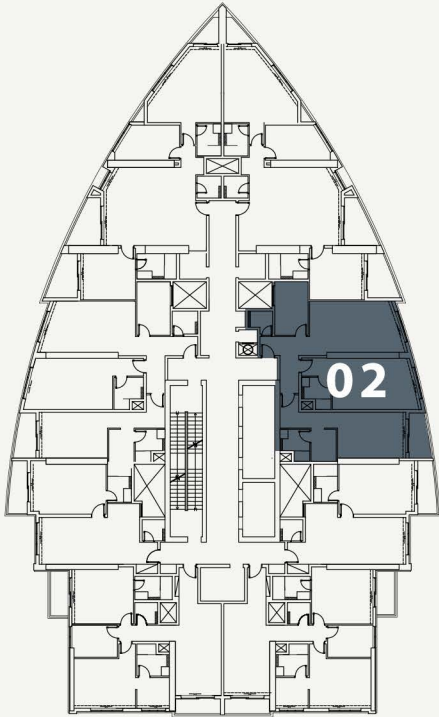








KEY PLAN



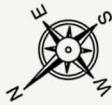
UNIT - 102  
2 BEDROOM  
LEVEL-01

Internal Living Area	1402.00	sq.ft.
Outdoor Living Area	113.02	sq.ft.
Total Living Area	1515.02	sq.ft.

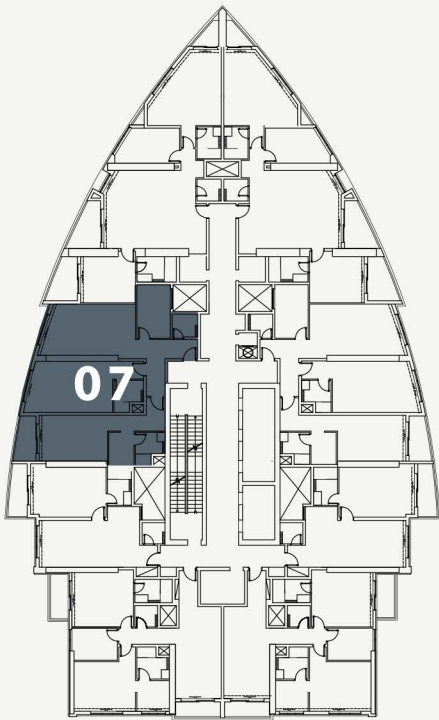
DISCLAIMER:

All measurements are indicative and are for marketing purposes only. All efforts have been made to ensure their accuracy, however these layouts are subject to change at the discretion of the developer and should not be relied upon as final. The actual area may vary from the stated area and the developer reserves the right to make the revisions/alterations, at its absolute discretion, without any liability whatsoever





KEY PLAN



UNIT - 107  
2 BEDROOM  
LEVEL-01

Internal Living Area	1402.00	sq.ft.
Outdoor Living Area	55.43	sq.ft.
Total Living Area	1457.43	sq.ft.

DISCLAIMER:

All measurements are indicative and are for marketing purposes only. All efforts have been made to ensure their accuracy, however these layouts are subject to change at the discretion of the developer and should not be relied upon as final. The actual area may vary from the stated area and the developer reserves the right to make the revisions/alterations, at its absolute discretion, without any liability whatsoever

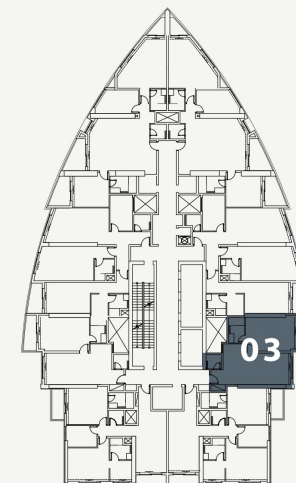








## KEY PLAN



## UNIT - 103

1 BEDROOM

LEVEL-01

Internal Living Area	756.70	sq.ft.
Outdoor Living Area	60.06	sq.ft.
<b>Total Living Area</b>	<b>816.77</b>	<b>sq.ft.</b>

### DISCLAIMER:

All measurements are indicative and are for marketing purposes only. All efforts have been made to ensure their accuracy, however these layouts are subject to change at the discretion of the developer and should not be relied upon as final. The actual area may vary from the stated area and the developer reserves the right to make the revisions/alterations, at its absolute discretion, without any liability whatsoever.

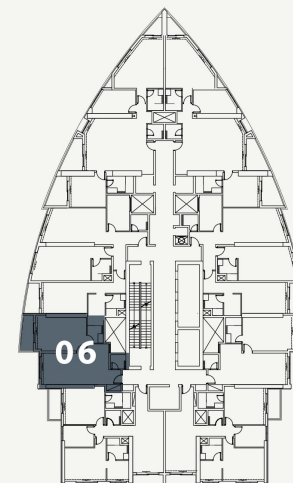


# AJMAN PEARL

TOWER



## KEY PLAN



## UNIT - 106

1 BEDROOM

LEVEL-01

Internal Living Area	756.70 sq.ft.
Outdoor Living Area	60.06 sq.ft.
<b>Total Living Area</b>	<b>816.77 sq.ft.</b>

### DISCLAIMER:

All measurements are indicative and are for marketing purposes only. All efforts have been made to ensure their accuracy, however these layouts are subject to change at the discretion of the developer and should not be relied upon as final. The actual area may vary from the stated area and the developer reserves the right to make the revisions/alterations, at its absolute discretion, without any liability whatsoever.



# AJMAN PEARL TOWERS: FACTS & FEATURES

PROPERTY TYPE: Residential Apartments

PROPERTY LOCATION: Ajman Downtown

TOTAL NUMBER OF UNITS: 208

UNIT MIX: 1 and 2 Beds

1 BEDROOM SIZE: 1083 sqft  
Starting from 587, 000 AED

2 BEDROOM SIZE: 2096 sqft  
Starting from: 957,000 AED

COMPLETION DATE: Q4/2027

HANDOVER DATE: Q1/2028

PAYMENT PLAN: 40/60  
(2 years/4 years, Total 6 years)







## NEARBY

Markets and Shopping Centers  
Schools and Universities  
Recreation Centers  
Restaurants  
Walking Areas  
Sitting Areas  
Parks





## ON-SITE

State-of-the-art health club  
Resort-style swimming pool  
Landscaped gardens  
Children's play area  
24/7 security  
Covered parking  
High-speed elevators  
Retail space







جي جا العقارية  
PROPERTIES

## THE NAME SHAPING AJMAN

GJ Properties has established itself as a premier luxury real estate developer in Ajman and the Northern Emirates, delivering high-quality projects that exemplify a commitment to excellence.

With a mission to create living spaces that offer an exceptional quality of life, the brand seamlessly blends human-centric design with superior build quality.

By focusing on prime locations, innovative architecture, and responsive maintenance, each development is designed to exceed the aspirations of a discerning clientele.

As the portfolio continues to expand, including ventures like the Biltmore Residences Sufouh in Dubai, GJ Properties remains dedicated to solidifying its position as Ajman's leading private developer.



## **HEAD OFFICE:**

Ground Floor, Oasis Tower 2  
Sheikh Rashid Bin Saeed Al Maktoum,  
Street Ajman, UAE

### **Phone**

+971 6 741 4478

### **Toll Free**

800 GJAJM (45256)

### **Email**

[info@gjproperties.ae](mailto:info@gjproperties.ae)

[www.gjproperties.ae](http://www.gjproperties.ae)



جي جا العقارية  
PROPERTIES





جي جا العقارية  
PROPERTIES



Discover your oasis of refined elegance at Ajman Pearl Tower. Invest in a lifestyle of sophistication and comfort.

[WWW.GJPROPERTIES.AE](http://WWW.GJPROPERTIES.AE) | 80045256